



Straumehagen Residential Building

Location: Straume, Norway

Client: Straumehagen AS (Veidekke Entreprenør AS, OBOS and Sartor Holding)

Status: Built, 2017

Size: 8 400 m²

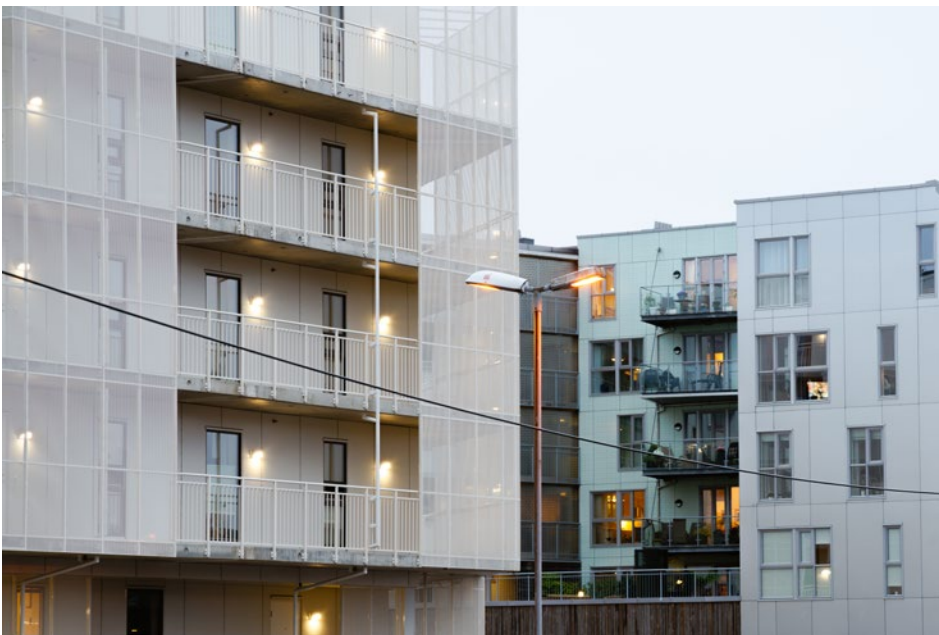
Program: Commercial buildings and housing

Renderers: MIR

Photography: RJS

Architect: 3RW arkitekter

[Download high-res images and press pack here](#)



Straumehagen and Sartorgården; copyright 3RW arkitekter



Project Text

Straumehagen is the latest addition to the centre of the new urban development of Straume, an island outside Bergen. 3RW arkitekter have designed the building to allow each apartment unit to look onto a communal courtyard with views towards the surrounding mountains and sea.

Perforated metal sheets adorn the north facade to provide protection from strong winds and ornament to the outdoor corridors leading into each residential unit. The building meets the ground with a one-storey timber envelope for commercial and office spaces.

Painted in cream-colour, the building speaks to its sister building, Sartorgården, also designed by 3RW arkitekter and completed in 2013, clad in tones of green. Straumehagen is part of the second phase of the new quarter, and together both projects aim at delivering the first steps towards the compact and vibrant urban development of Straume. They are amongst the first projects built as part of Fjell Municipality and Hordaland Regions' plans for the compact urban development of Straume. The projects are part of the area plans for the new costal city at Sotra.

Sotra Costal City gives its residents a fully-fledged urban offer, focusing on the area's green structures and pedestrian access. A hole has already been dug underground, allowing for 1500 cars to park and making space for large and open public spaces and meeting points, green trees, cafés and restaurants. Cinemas, shops, restaurants and a broad selection of public and private services will also be located here, together with an extensive range of cultural and leisure activities. The urban life at Straume will give close proximity to the unique nature and costal environment of Sotra.

The two projects, Sartorgården and Straumehagen, consist of a total of seven to nine floors; two underground parking floors, one-to-two floors for commercial businesses, shops and offices, and five apartment floors. These buildings facilitate good, common outdoor areas covering the commercial programs, with residential buildings surrounding green courtyards with good connections, light and views of the surrounding nature.

These images are **courtesy of 3RW**. All images must be credited correctly according to the copyright notes included in their corresponding caption. The images may not be passed to any third parties without prior permission. No part of the work may be reproduced or utilised in any form or by any means, electronic or mechanical, including photocopying, recording or by any information storage retrieval system, without permission in writing from 3RW.



South-Eastern corner; copyright 3RW arkitekter



South-Eastern corner; copyright 3RW arkitekter



South-Eastern corner; copyright 3RW arkitekter



East facade; copyright 3RW arkitekter



Public corridor; copyright 3RW arkitekter



Residential entrance; copyright 3RW arkitekter

These images are **courtesy of 3RW**. All images must be credited correctly according to the copyright notes included in their corresponding caption. The images may not be passed to any third parties without prior permission. No part of the work may be reproduced or utilised in any form or by any means, electronic or mechanical, including photocopying, recording or by any information storage retrieval system, without permission in writing from 3RW.



North-east facade; copyright 3RW arkitekter



North Facade; copyright 3RW arkitekter



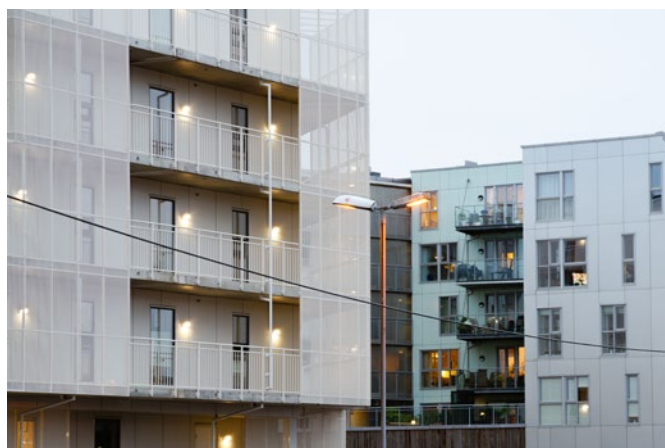
East Facade; copyright 3RW arkitekter



North Facade; copyright 3RW arkitekter



North Facade; copyright 3RW arkitekter



Straumehagen and Sartorgården, both by 3RW arkitekter; copyright 3RW arkitekter

These images are **courtesy of 3RW**. All images must be credited correctly according to the copyright notes included in their corresponding caption. The images may not be passed to any third parties without prior permission. No part of the work may be reproduced or utilised in any form or by any means, electronic or mechanical, including photocopying, recording or by any information storage retrieval system, without permission in writing from 3RW.



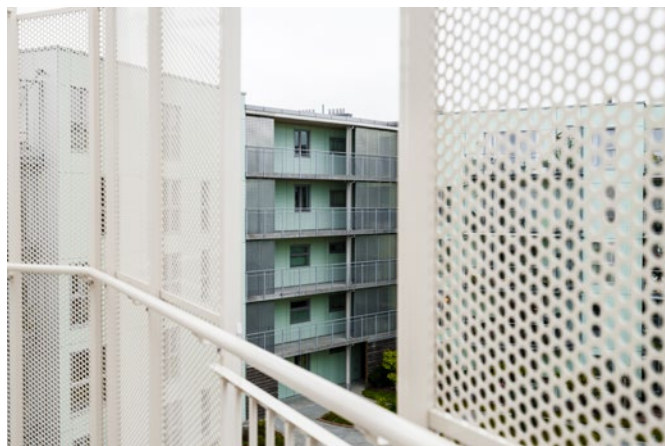
View of Straumehagen from its also 3RW-designed sister building Sartorgården; copyright 3RW arkitekter



Timber-cladded base; copyright 3RW arkitekter



North-eastern corner; copyright 3RW arkitekter



Sartorgården seen through Straumehagen's perforated steel mesh; copyright 3RW arkitekter



Perforated steel panels shelter the exterior walkways from the wind; copyright 3RW arkitekter



Perforated steel panel; copyright 3RW arkitekter

These images are **courtesy of 3RW**. All images must be credited correctly according to the copyright notes included in their corresponding caption. The images may not be passed to any third parties without prior permission. No part of the work may be reproduced or utilised in any form or by any means, electronic or mechanical, including photocopying, recording or by any information storage retrieval system, without permission in writing from 3RW.



Each residential unit is accessed via external corridors; copyright 3RW arkitekter



Each residential unit is accessed via external corridors; copyright 3RW arkitekter



Corner; copyright 3RW arkitekter



Cream-coloured facade with perforated steel panels; copyright 3RW arkitekter



Cream-coloured facade with perforated steel panels; copyright 3RW arkitekter



Landscaping along the public walkway separating Straumehagen from Sartorgården; copyright 3RW arkitekter

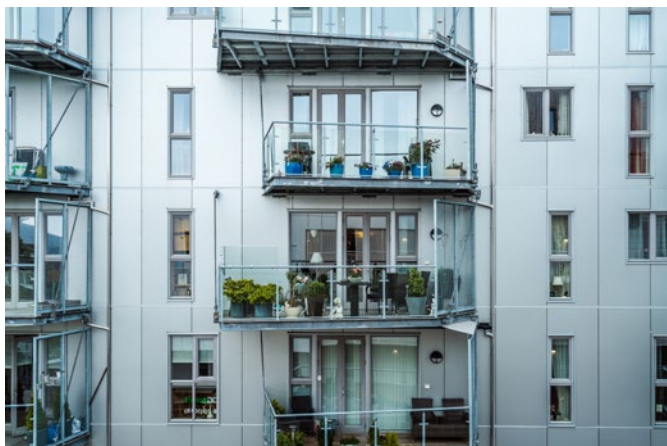
These images are **courtesy of 3RW**. All images must be credited correctly according to the copyright notes included in their corresponding caption. The images may not be passed to any third parties without prior permission. No part of the work may be reproduced or utilised in any form or by any means, electronic or mechanical, including photocopying, recording or by any information storage retrieval system, without permission in writing from 3RW.



Public walkway separating Straumehagen from Sartorggården; copyright 3RW arkitekter



Straumehagen context; copyright 3RW arkitekter



3RW-designed sister building Sartorgaarden seen from Straumehagen walkway; copyright 3RW arkitekter



3RW-designed sister building Sartorgaarden facade; copyright 3RW arkitekter



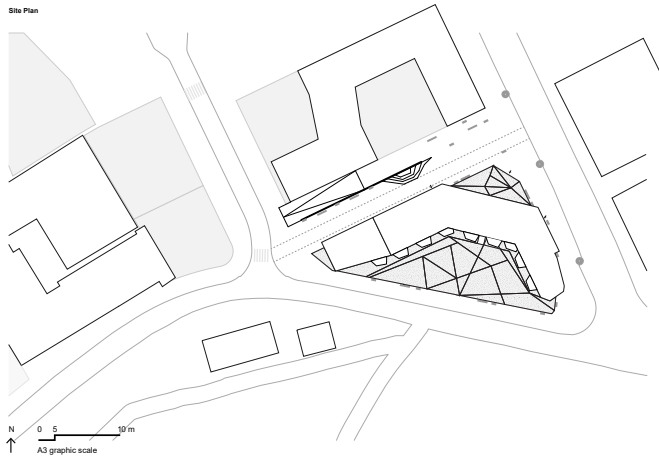
Straumehagen as seen from Sartorgaarden courtyard; copyright 3RW arkitekter



Sartorgaarden courtyard; copyright 3RW arkitekter

These images are **courtesy of 3RW**. All images must be credited correctly according to the copyright notes included in their corresponding caption. The images may not be passed to any third parties without prior permission. No part of the work may be reproduced or utilised in any form or by any means, electronic or mechanical, including photocopying, recording or by any information storage retrieval system, without permission in writing from 3RW.

Site Plan



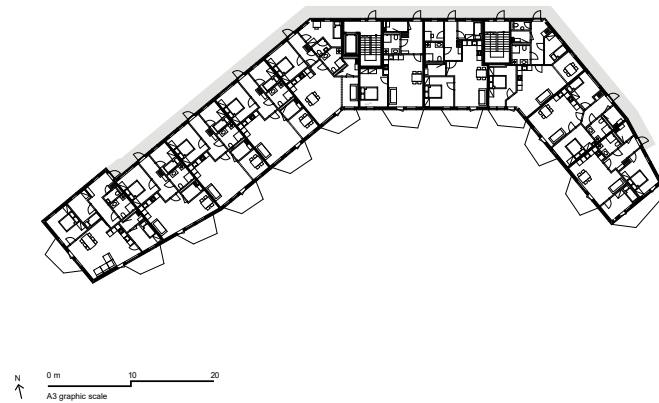
Situation plan; copyright 3RW arkitektur

Second Floor Plan



Second Floor Plan; copyright 3RW arkitektur

Typical Floor Plan



Typical Floor plan; copyright 3RW arkitektur

South Facade



Elevation South; copyright 3RW arkitektur

North Facade



Elevation North; copyright 3RW arkitektur

These images are **courtesy of 3RW**. All images must be credited correctly according to the copyright notes included in their corresponding caption. The images may not be passed to any third parties without prior permission. No part of the work may be reproduced or utilised in any form or by any means, electronic or mechanical, including photocopying, recording or by any information storage retrieval system, without permission in writing from 3RW.



Render; copyright MIR (www.mir.no)



Render; copyright MIR (www.mir.no)



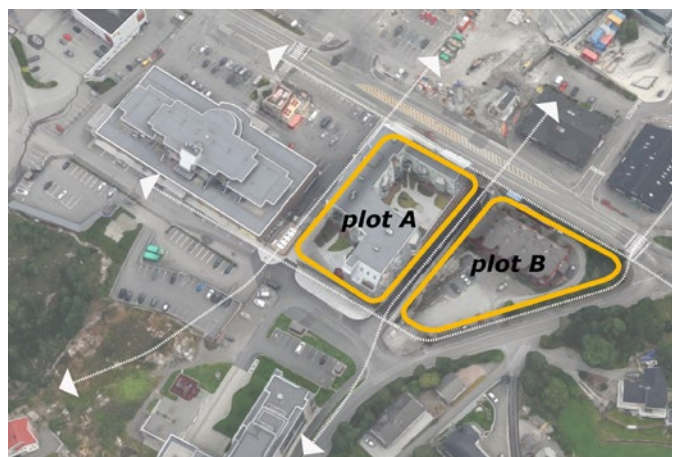
Render; copyright MIR (www.mir.no)



Render; copyright MIR (www.mir.no)



Straumehagen and Sartorgaarden landscape; copyright 3RW arkitekter



Circulation concept; copyright 3RW arkitekter

These images are **courtesy of 3RW**. All images must be credited correctly according to the copyright notes included in their corresponding caption. The images may not be passed to any third parties without prior permission. No part of the work may be reproduced or utilised in any form or by any means, electronic or mechanical, including photocopying, recording or by any information storage retrieval system, without permission in writing from 3RW.



Drawings & Concept



3RW-designed sister building Sartorgaarden seen from Straumehagen; copyright 3RW arkitekter



Straumehagen courtyard; copyright 3RW arkitekter



Straumehagen courtyard; copyright 3RW arkitekter

These images are **courtesy of 3RW**. All images must be credited correctly according to the copyright notes included in their corresponding caption. The images may not be passed to any third parties without prior permission. No part of the work may be reproduced or utilised in any form or by any means, electronic or mechanical, including photocopying, recording or by any information storage retrieval system, without permission in writing from 3RW.