



SIB Grønneviksøren

[Download Press Pack at this link](#)

—

Project: SIB Grønneviksøren

Period: 2009-2016

Status: Built

Client: SiB Studentsamskipnaden i Bergen

Site: Bergen, Norway

Program: 727 student apartments

Size: 20 750 m²

Design Partners: Smedsvig Landskapsarkitekter AS, Multiconsult AS

Contractor: Faktor Industrier AS, Norsk betontindustri AS

Prize Nomination: Mies van der Rohe 2015



Project Text

The student housing at Grønneviksøren is an attempt to answer one of our biggest challenges in today's growing cities: How to create good architecture for a great number of people who need homes for a low budget in the city center?

Bergen is today home to 27 000 students spread over various academic institutions in the city. Planning accommodation complying with the future student needs will strengthen their role as active participants in the urban arena. As of today, the city offers a wide range of social arenas for them to participate in. Their evaluation and renewal will be necessary to complete future residential strategies. The transformation area of Grønneviksøren is located in the outskirts of the urban area with about 20 min. walking distance to the centre of Bergen.

The project is a low cost building based on 727 modules manufactured in a factory and transported by boat to the construction site. Grønneviksøren represents one of the largest modular buildings in Europe.

The student houses at Grønneviksøren consist of small living units and common functions distributed inside 17 different building groups with varying heights up to 8 floors. The project is realized as two separate building blocks. This division into two independent blocks ensures the overall ambition of clearly open visual and physical connections to the surrounding areas and the city center.

Inside each block the building groups are connected with external galleries addressed towards the open inner courtyards. The external galleries have a width of 3 meters which provide that they can both be used as access walkways for the individual housing units, and common spacious outdoor areas for social encounters and activities. This provides the external galleries the clear role as semi-public zones of interaction between the individual housing units and the public areas. The open inner courtyards are developed as public outdoor spaces with different gardens and playgrounds that contribute to a wide range of activities.

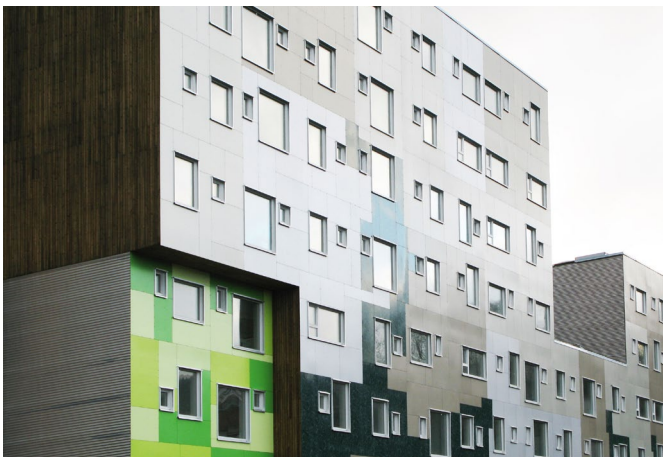
With a total capacity of around 1 000 students, the project is expected to have a positive impact on the overall rent levels in Bergen. Reducing the prices in the private market and avoiding further uncontrolled increases, as it has done in the past year.



Copyright 3RW, photography Cecilie Bannow



Copyright 3RW, photography Cecilie Bannow



Copyright 3RW, photography Cecilie Bannow



Copyright 3RW, photography Cecilie Bannow



Copyright 3RW, photography Cecilie Bannow



Copyright 3RW, photography Cecilie Bannow

These images are **courtesy of 3RW**. All images must be credited correctly according to the copyright notes included in their corresponding caption. The images may not be passed to any third parties without prior permission. No part of the work may be reproduced or utilised in any form or by any means, electronic or mechanical, including photocopying, recording or by any information storage retrieval system, without permission in writing from 3RW.



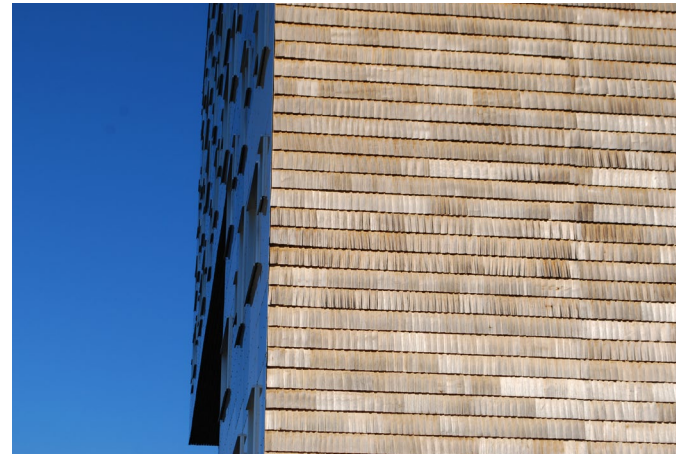
Copyright 3RW, photography Cecilie Bannow



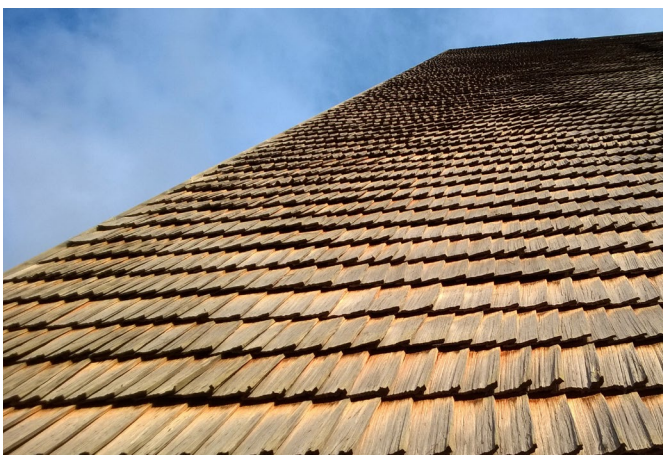
Copyright 3RW, photography Cecilie Bannow



Copyright 3RW, photography Cecilie Bannow



Copyright 3RW, photography Cecilie Bannow



Copyright 3RW, photography Cecilie Bannow



Copyright 3RW, photography Cecilie Bannow

These images are **courtesy of 3RW**. All images must be credited correctly according to the copyright notes included in their corresponding caption. The images may not be passed to any third parties without prior permission. No part of the work may be reproduced or utilised in any form or by any means, electronic or mechanical, including photocopying, recording or by any information storage retrieval system, without permission in writing from 3RW.



Copyright 3RW, photography Cecilie Bannow



Copyright 3RW, photography Cecilie Bannow



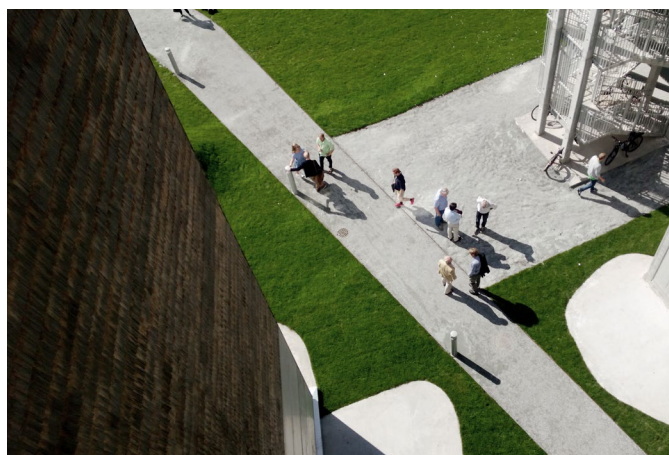
Copyright 3RW, photography Cecilie Bannow



Copyright 3RW, photography Cecilie Bannow



Copyright 3RW, photography Cecilie Bannow



Copyright 3RW, photography Cecilie Bannow

These images are **courtesy of 3RW**. All images must be credited correctly according to the copyright notes included in their corresponding caption. The images may not be passed to any third parties without prior permission. No part of the work may be reproduced or utilised in any form or by any means, electronic or mechanical, including photocopying, recording or by any information storage retrieval system, without permission in writing from 3RW.

75A /
5 \ V

Photography



Copyright 3RW, photography Cecilie Bannow



Copyright 3RW, photography Cecilie Bannow



Copyright 3RW, photography Cecilie Bannow



Copyright 3RW, photography Cecilie Bannow



Copyright 3RW, photography Cecilie Bannow



Copyright 3RW, photography Cecilie Bannow

These images are **courtesy of 3RW**. All images must be credited correctly according to the copyright notes included in their corresponding caption. The images may not be passed to any third parties without prior permission. No part of the work may be reproduced or utilised in any form or by any means, electronic or mechanical, including photocopying, recording or by any information storage retrieval system, without permission in writing from 3RW.

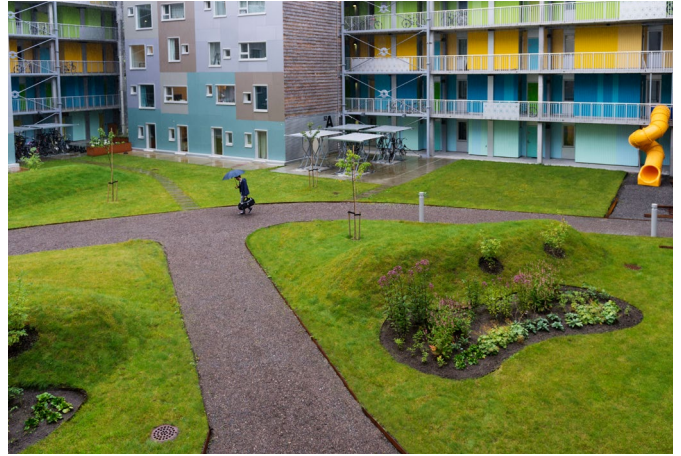
3RW arkitektur
PB 1131 - 5809 Bergen - Norway
t +47 555 575 10 - m 3rw@3rw.com
www.3rw.no

75A /
51 V

Photography



Copyright 3RW, photography Cecilie Bannow



Copyright 3RW, photography Cecilie Bannow



Copyright 3RW, photography Cecilie Bannow



Copyright 3RW, photography Cecilie Bannow



Copyright 3RW, photography Cecilie Bannow



Copyright 3RW, photography Cecilie Bannow



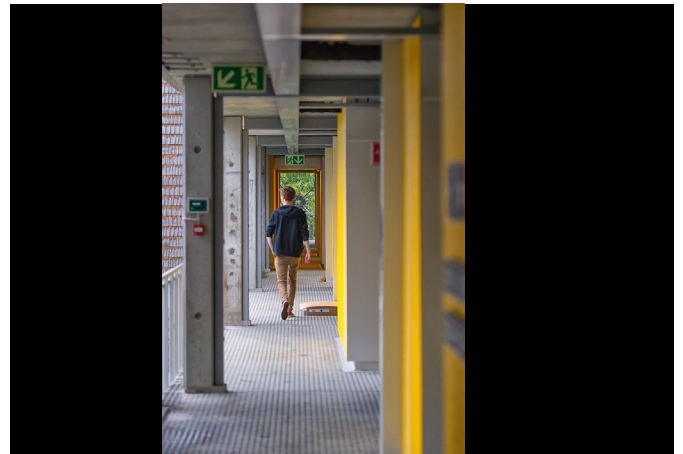
Copyright 3RW, photography Cecilie Bannow



Copyright 3RW, photography Cecilie Bannow



Copyright 3RW, photography Cecilie Bannow



Copyright 3RW, photography Cecilie Bannow



Copyright 3RW, photography Cecilie Bannow



Copyright 3RW, photography Cecilie Bannow

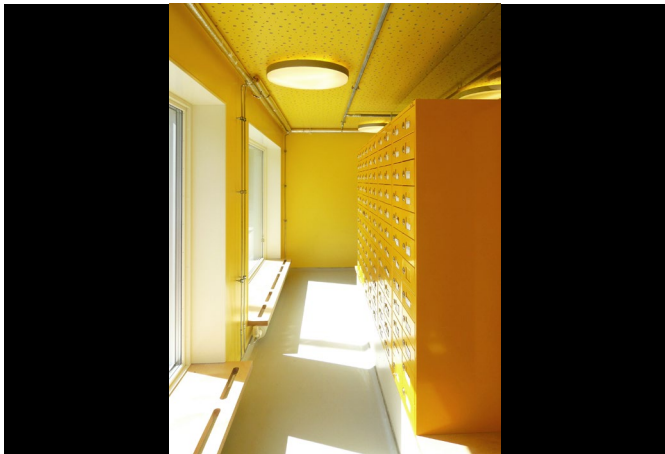
These images are **courtesy of 3RW**. All images must be credited correctly according to the copyright notes included in their corresponding caption. The images may not be passed to any third parties without prior permission. No part of the work may be reproduced or utilised in any form or by any means, electronic or mechanical, including photocopying, recording or by any information storage retrieval system, without permission in writing from 3RW.



Please contact Jarle H. Moe if you would like to use this photo: <http://www.jarlehm.com/>



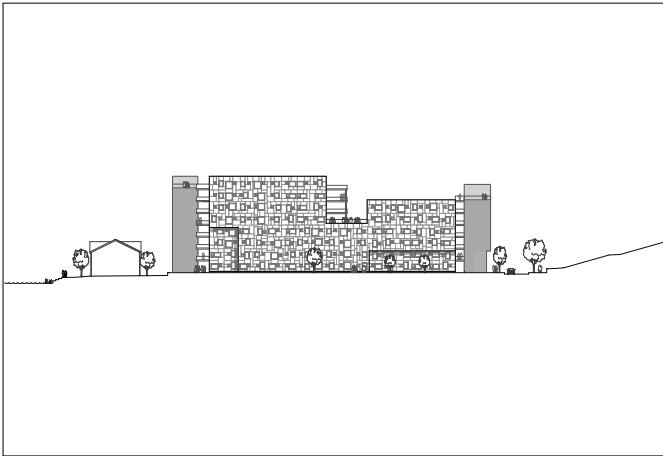
Copyright 3RW, photography Cecilie Bannow



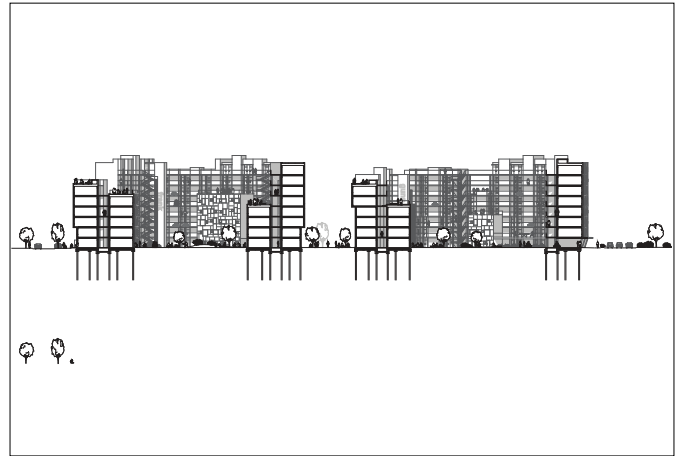
Copyright 3RW

These images are **courtesy of 3RW**. All images must be credited correctly according to the copyright notes included in their corresponding caption. The images may not be passed to any third parties without prior permission. No part of the work may be reproduced or utilised in any form or by any means, electronic or mechanical, including photocopying, recording or by any information storage retrieval system, without permission in writing from 3RW.

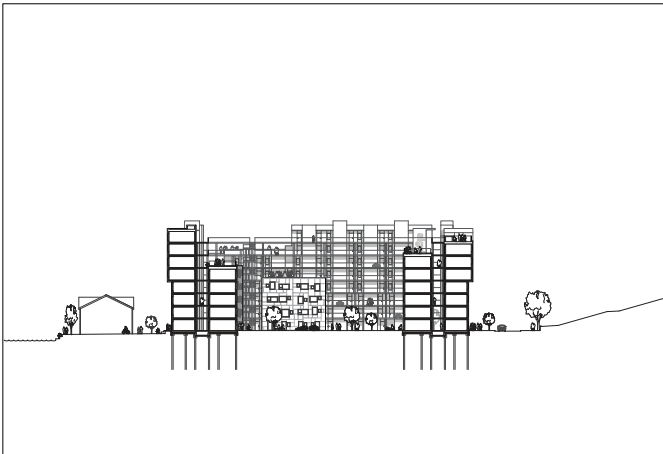
Drawings and Concept



South Facade Elevation; copyright 3RW



Long Section; copyright 3RW



Short Section; copyright 3RW



Site Plan; copyright 3RW

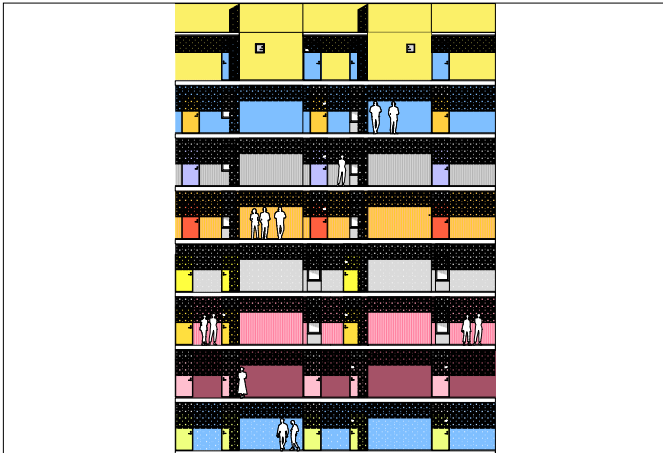


Overview Plan - organization of typologies; copyright 3RW

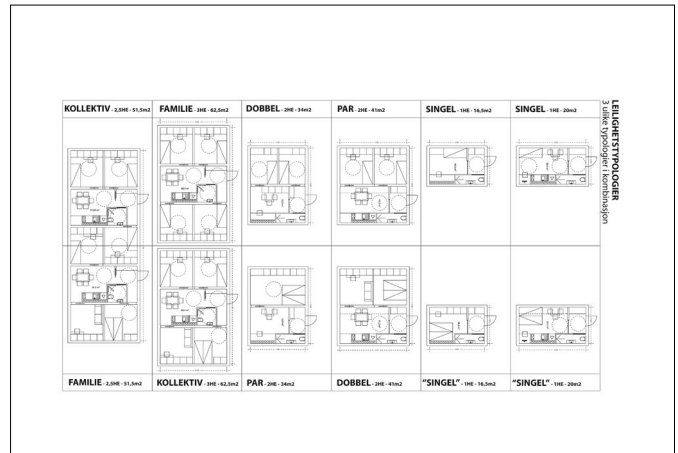


Modules Logic; copyright 3RW

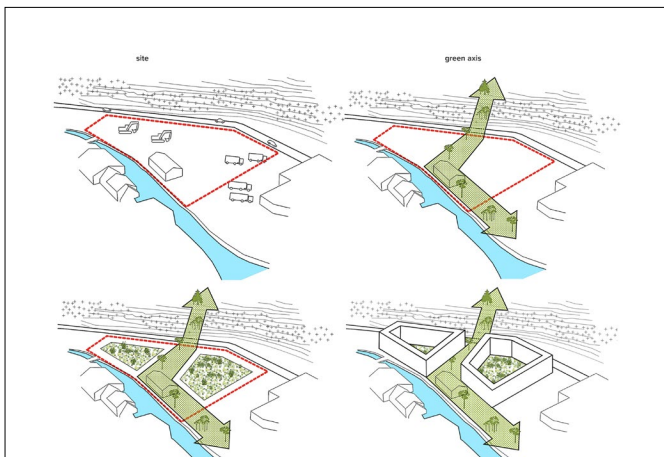
These images are **courtesy of 3RW**. All images must be credited correctly according to the copyright notes included in their corresponding caption. The images may not be passed to any third parties without prior permission. No part of the work may be reproduced or utilised in any form or by any means, electronic or mechanical, including photocopying, recording or by any information storage retrieval system, without permission in writing from 3RW.



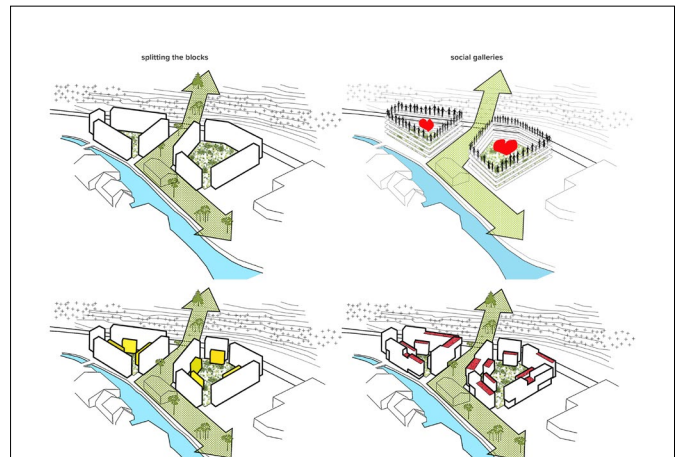
Facade detail and colouring; copyright 3RW



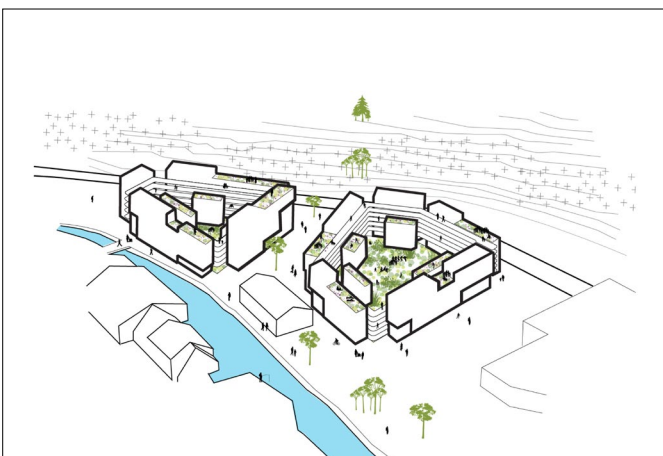
Modular Unit Plans; copyright 3RW



Diagram; copyright 3RW



Diagram; copyright 3RW

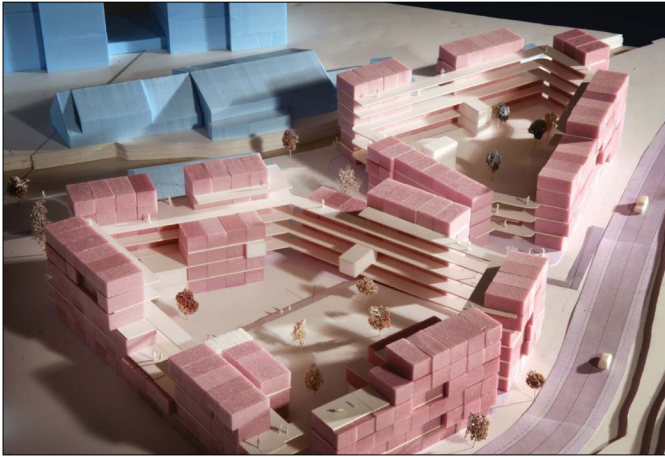


Diagram; copyright 3RW

These images are **courtesy of 3RW**. All images must be credited correctly according to the copyright notes included in their corresponding caption. The images may not be passed to any third parties without prior permission. No part of the work may be reproduced or utilised in any form or by any means, electronic or mechanical, including photocopying, recording or by any information storage retrieval system, without permission in writing from 3RW.

75A /
51 V

Drawings and Concept



Model; copyright 3RW



Model; copyright 3RW

These images are **courtesy of 3RW**. All images must be credited correctly according to the copyright notes included in their corresponding caption. The images may not be passed to any third parties without prior permission. No part of the work may be reproduced or utilised in any form or by any means, electronic or mechanical, including photocopying, recording or by any information storage retrieval system, without permission in writing from 3RW.

3RW arkitektur
PB 1131 - 5809 Bergen - Norway
t +47 555 575 10 - m 3rw@3rw.com
www.3rw.no



Construction Photo; copyright 3RW



From concept to construction; copyright 3RW



The modules being put into place; copyright 3RW



Modules transport; copyright 3RW

These images are **courtesy of 3RW**. All images must be credited correctly according to the copyright notes included in their corresponding caption. The images may not be passed to any third parties without prior permission. No part of the work may be reproduced or utilised in any form or by any means, electronic or mechanical, including photocopying, recording or by any information storage retrieval system, without permission in writing from 3RW.